

 **SCHOOLUNIFORM**  
CHINEE GARMENT CO., LTD

**GARMENT**  
CHINEE GARMENT CO., LTD

## Chinee Garment Co., Ltd

Office: ShunJing Trade Center, No.855, Industrial Avenue South, Haizhu District, Guangzhou, China (Mainland).  
Factory: Yandong Village, Dongwangji Town, Guanyun County, Lianyungang City, Jiangsu Province, China (Mainland)

[www.china-schooluniform.com](http://www.china-schooluniform.com)

 **SCHOOLUNIFORM**  
SUPPORT THE DESIGN AND CUSTOMIZATION OF ALL TYPES OF SCHOOL UNIFORMS.

*Providing school uniform solutions  
for all schools  
OEM/ODM Service Available with*



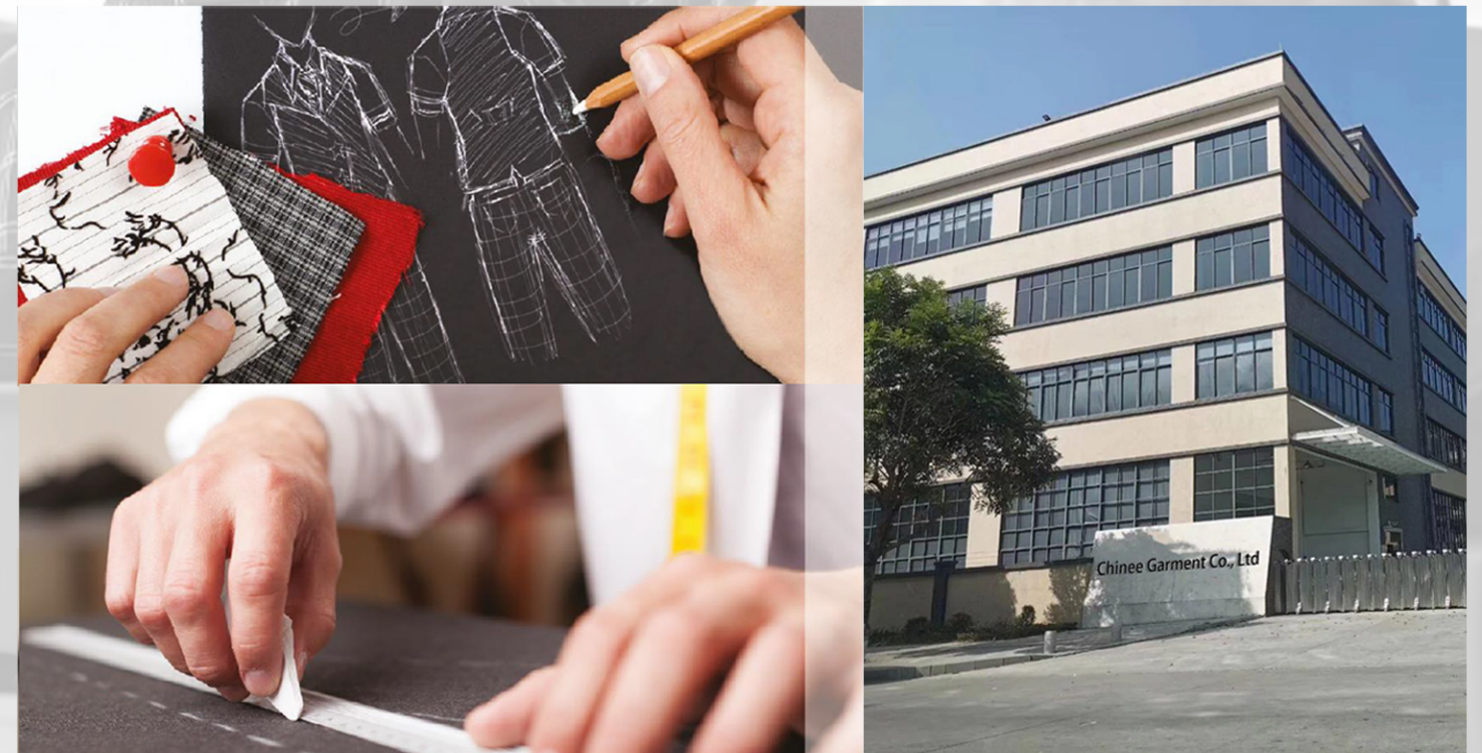
# CONTENTS

Chinee Garment Co., Ltd, a key subsidiary of Chinee Group Co., Ltd, distinguishes itself as a premier manufacturer and global exporter of school uniforms.

Emphasizing superior quality, our products are crafted using advanced manufacturing techniques and the finest materials, ensuring durability, comfort, and style. Our commitment to excellence has garnered us a worldwide reputation, offering a broad range of designs to meet diverse preferences, all at competitive prices.

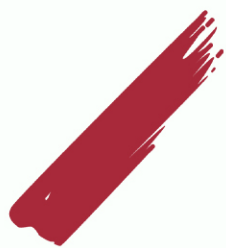
- 1.OEM/ODM Servie Available with
- 2.LOW MOQ100+style
- 3.Designs for your selection

<u>Baseball Jacket</u>	<u>01-02</u>
<u>School Formal Suits</u>	<u>03-06</u>
<u>Spring &amp; Autumn suit</u>	<u>07-08</u>
<u>Summer Polo set &amp; Shirt set</u>	<u>09-12</u>
<u>Winter Jacket</u>	<u>13-14</u>



# 1. BASEBALL JACKET

## CHINEE GARMENT CO., LTD



### SU-024

- school uniform white baseball suit polyester
- customiziation feature



### SU-029

- school uniform purple baseball jacket cotton
- polyester material

### SU-019

- new school uniform stripe baseball jacket cotton
- polyester material

## 2. SCHOOL FORMAL SUITS

# CHINEE GARMENT CO., LTD



**SU-010**

- new collection children formal suit school wear
- customization



**SU-008** ● customization  
new collection children  
suit school wear



**SU-011** ● customization  
new collection children suit  
school wear uniform set

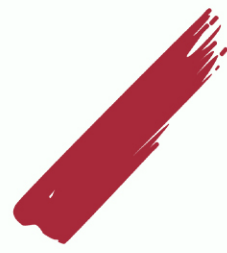


**SU-006**

- new collection children suit school wear
- customization

## 2. SCHOOL FORMAL SUITS

# CHINEE GARMENT CO., LTD



**SU-007**

- new collection children suit school formal wear
- customization



**SU-012** ● customization

new collection children suit school uniforms formal wear



**SU-005** ● customization

new collection children suit school wear



**SU-004**

- new collection children suit school formal wear
- customization

### 3. SPRING & AUTUMN SUIT

## CHINEE GARMENT CO., LTD



#### SU-042

- new school collection kids yellow&blue long sleeve suit cotton
- customization
- polyester feature



**SU-044** ● customization  
new kids school collection red blue stripe long sleeve suits



**SU-043** ● customization  
new kids school collection stripe long sleeve cotton&polyester



#### SU-045

- new children school uniform formal long sleeve suit grey stripe sleeve
- customization

#### 4. SUMMER POLO SET & SHIRT SET

### CHINEE GARMENT CO., LTD



**SU-062**

- new school collection summer kids POLO suit
- customization



**SU-059** ● customization  
new school uniform summer children grey POLO suit



**SU-083** ● customization  
new school uniform summer children POLO set



**SU-074**

- new school collection children stripe summer POLO set
- customization

#### 4. SUMMER POLO SET & SHIRT SET

### CHINEE GARMENT CO., LTD



#### SU-079

- new school collection summer blue children POLO set
- customization

**SU-077** ● customization  
new school uniform shirts  
and pants royal blue POLO set





## 5. WINTER JACKET

# CHINEE GARMENT CO., LTD



**SU-028**

- new collection children jacket school wear
- customization



**SU-018** ● customization

new collection children  
jacket school wear



**SU-036** ● customization

new collection children jacket  
school wear



**SU-030**

- new collection children jacket school wear
- customization

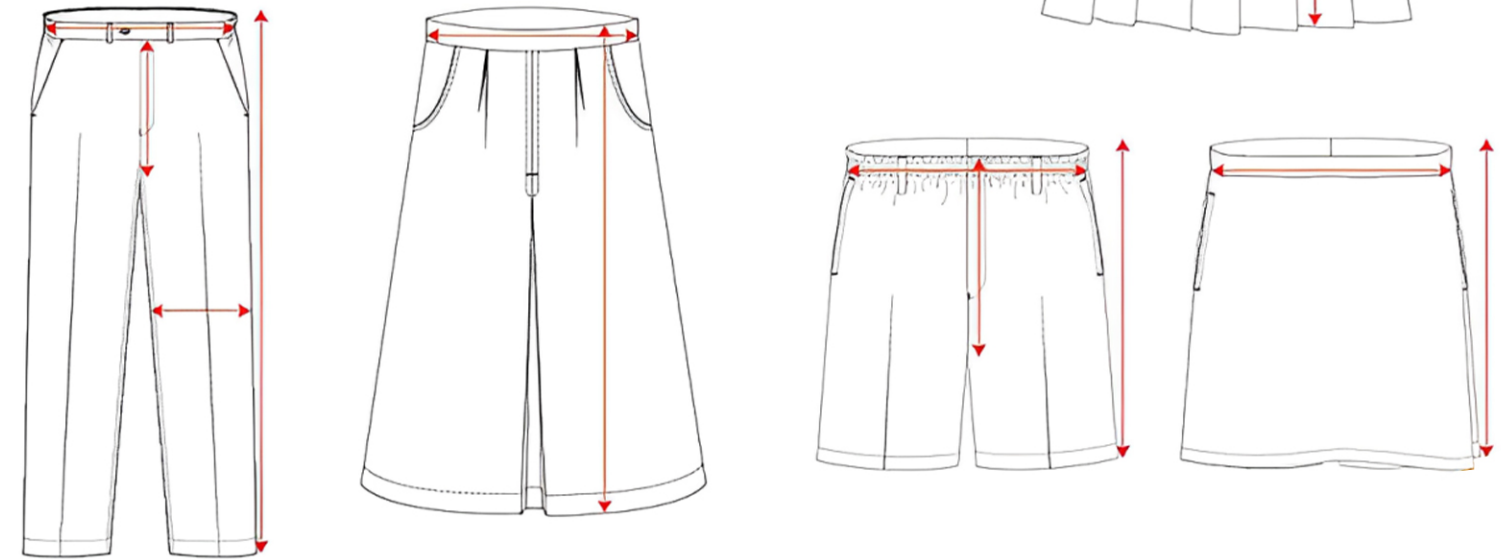
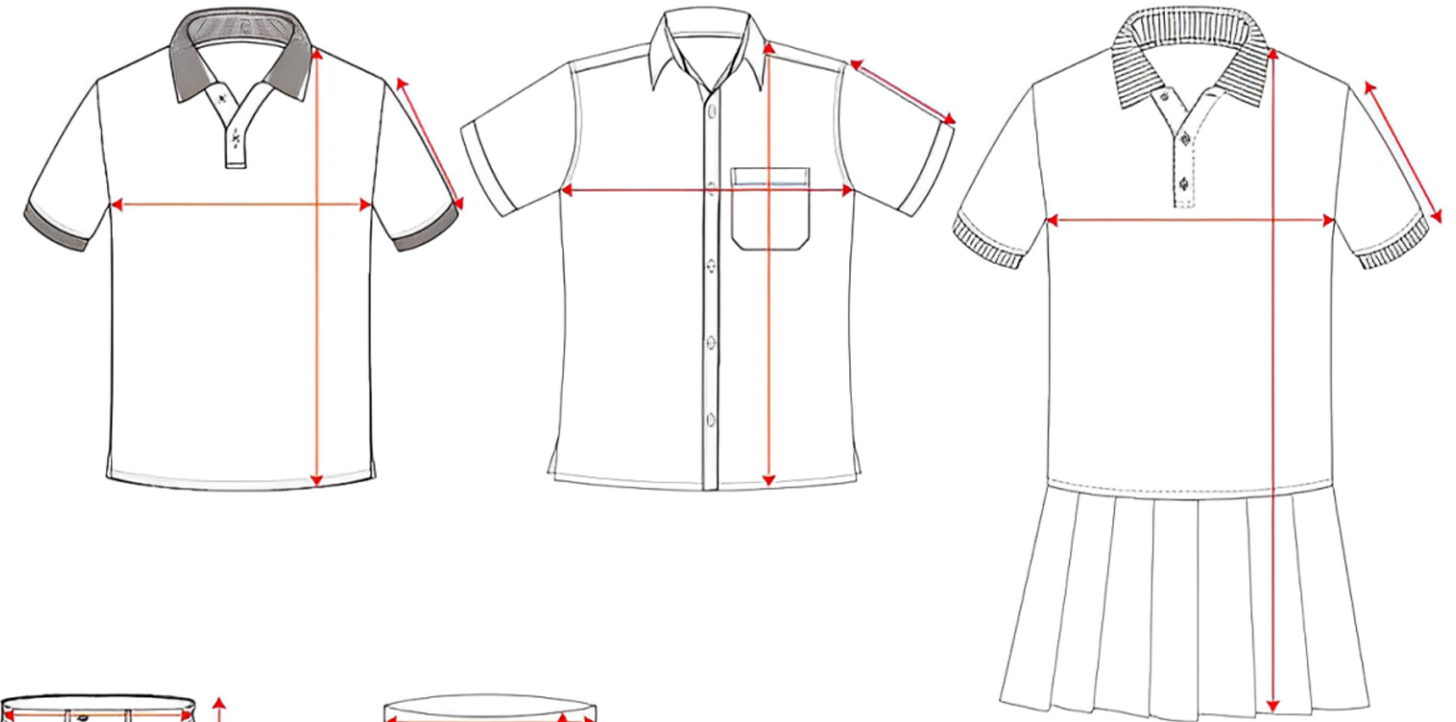
# SIZE GUIDE

Chinee Garment Co., Ltd  
[www.china-schooluniform.com](http://www.china-schooluniform.com)

## HOW TO MEASURE:



All tops are measured  
in CENTMETER.



All bottoms are measured  
in INCHES.